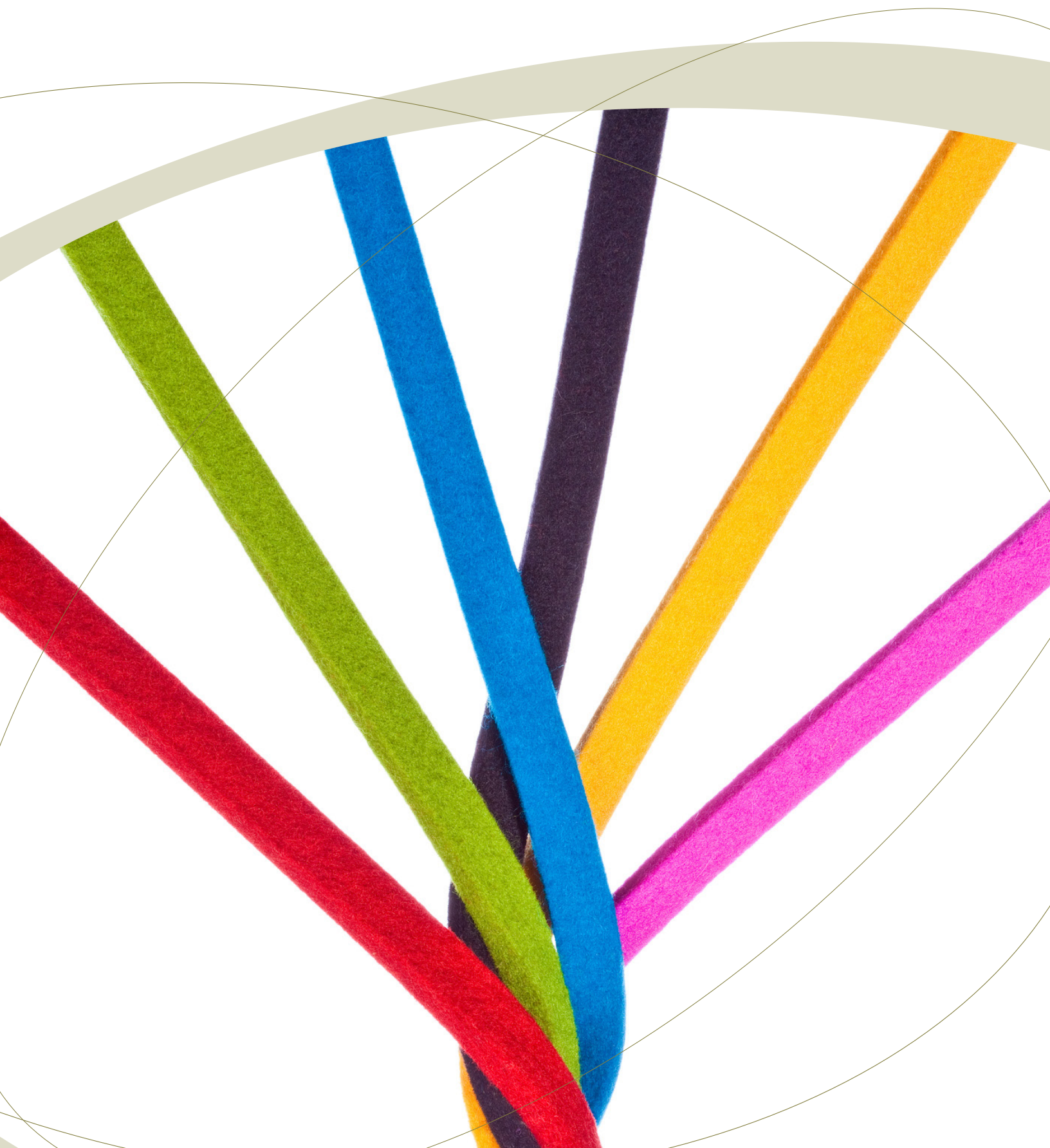




# PROVINCIAL COUNCIL FOR MATERNAL AND CHILD HEALTH

## ANNUAL REPORT 2023/24



# CONTENTS

**3** About Us

**3** Acknowledgement of the Land and First Peoples

**4** Joint Message from the Chair  
and Executive Director

**5** 2024 – 2029 Strategic Plan

**6** Supporting Inclusive Care for All Ontarians

**8** Engaging Our Partners to  
Improve Health Outcomes

**11** Driving System Improvement

**13** Governing Council, Committees and Secretariat



## ABOUT US

Established in 2008, PCMCH is a provincial organization that provides evidence-based and strategic leadership for perinatal, newborn, child and youth health services in Ontario. PCMCH is funded by the Government of Ontario.

### Our Mission

To improve health outcomes and reduce inequities through effective leadership, collaborative partnerships and the use of evidence.

### Our Vision

Optimal health and wellness for all pregnant women and individuals, newborns, children, youth and their families in Ontario.

### Our Values

Collaborative  
Responsive  
Inclusive  
Innovative  
Evidence-based

## ACKNOWLEDGEMENT OF THE LAND AND FIRST PEOPLES

PCMCH acknowledges with sincere gratitude the opportunity to work and live on this beautiful land that has been occupied by First Nations since the beginning of time. This land, on which PCMCH operates, is the traditional territory of the Haudenosaunee, Wendat and Anishinaabe Peoples. Today, Toronto is covered by the Toronto Purchase, Treaty No. 13 with the Mississaugas of the Credit. Toronto is now home to Indigenous Peoples from across Turtle Island.

PCMCH recognizes that Indigenous practices of health and well-being have been in place in this territory since time began and are maintained to this day. We are committed to honoring and improving our knowledge on these practices. We recognize the harms and mistakes of the past and we take meaningful steps toward reconciliation by building and improving relationships with First Nations, Inuit, and Métis peoples.

# JOINT MESSAGE FROM THE CHAIR AND EXECUTIVE DIRECTOR

## Leadership Through Collaboration

Access to high-quality and affirming care is a cornerstone of our healthcare system, something that Ontarians deserve and expect. It is made possible through the tireless and dedicated work of skilled professionals who provide care to those in need. It also requires coordination, collaboration and leadership, especially in a province as big and diverse as Ontario.

As a leader in the perinatal, newborn, child and youth health services space, PCMCH provides evidence-based guidance and support to improve health outcomes and experiences in Ontario. We achieve our mission by actively collaborating with experts, healthcare professionals and those with lived experience as well as with organizations working across the care spectrum – from hospitals and community providers to government and other provincial agencies.

Collaborative leadership is embedded in our mission and values and was also the driving force behind the development of our 2024 – 2029 Strategic Plan – a major initiative for PCMCH this past year. The Strategic Plan identifies three strategic priorities that guide our current and future activities: Driving System Improvement; Using Evidence to Enhance Excellence in Care; and Guiding the System Through Influence.

In this annual report, you will find examples of how PCMCH achieved success through collaborative leadership. Together with our partners, we developed and released guidelines, tools and other resources to support professionals providing care to pregnant women and individuals, babies, children and their families. We worked with various organizations to identify gaps in care, helping to establish guidance and processes to improve coordination between healthcare professionals, sectors and regions and drive system improvement. And we fostered a culture of inclusivity – internally and externally – engaging diverse perspectives and working to remove barriers in care experienced by equity-deserving populations.

As we conclude another year, we want to thank the PCMCH Secretariat staff and Governing Council, our partners, and the hundreds of individuals who contributed to our committees, work groups and initiatives. Their work and expertise are critical to PCMCH's ongoing success. We are deeply grateful for their support and look forward to continuing to collaborate with them in the year ahead.



A handwritten signature in blue ink, reading "Bruce Squires".

Bruce Squires  
Chair



A handwritten signature in blue ink, reading "Sanober Diaz".

Sanober Diaz  
Executive Director



# 2024 – 2029 STRATEGIC PLAN

## OUR VISION

Optimal health and wellness for all pregnant women and individuals, newborns, children, youth and their families in Ontario.

## OUR MISSION

To improve health outcomes and reduce inequities through effective leadership, collaborative partnerships and the use of evidence.

## OUR VALUES

Collaborative  
Responsive  
Inclusive  
Innovative  
Evidence-Based

---

## OUR STRATEGIC PRIORITIES



### DRIVE SYSTEM IMPROVEMENT

#### PCMCH will:

- Bring relevant sectors together to address pressing provincial issues, needs, and equity concerns
- Enable and support regional networks to identify and implement care improvements within their regional and local contexts
- Develop a framework to understand, monitor, and report on quality and system performance



### USE EVIDENCE TO ENHANCE EXCELLENCE IN CARE

#### PCMCH will:

- Assess where evidence and data are adequate and accessible, and where data improvement is needed
- Identify critical gaps in the system and co-design guidance to address these gaps and improve care delivery for the populations we support
- Support the implementation of best practices and other guidance to improve the quality of care, health outcomes, and experiences in Ontario



### GUIDE THE SYSTEM THROUGH INFLUENCE

#### PCMCH will:

- Identify, advise and make recommendations on system design, planning and priority setting
- Strengthen partnerships with government and other organizations
- Unite organizations and sectors under a collective vision for the future of care for pregnant women and individuals, newborns, children, and youth

---

## OUTCOMES

### THROUGH OUR ACTIONS, PCMCH AIMS TO ACHIEVE THE FOLLOWING OUTCOMES

- Improved and more equitable access to care across Ontario
- Improved transparency and reporting
- Improved quality of care, health outcomes, and experiences
- A more coordinated and efficient system
- Greater awareness and prioritization of pregnancy, newborn, child, and youth health



## SUPPORTING INCLUSIVE CARE FOR ALL ONTARIANS

### Translating Our Commitment into Action

During the past year, PCMCH recruited two program managers to improve our engagement with Ontario's diverse communities and ensure our work is conducted through an equity lens. Through the work of the new Program Manager, Indigenous Health Equity and Engagement, we seek to build meaningful relationships with Indigenous organizations and communities, and have Indigenous perspectives shape the design and implementation of our initiatives. The new Program Manager, Equity, Diversity and Inclusion will support our work in reducing barriers faced by racialized and equity-deserving populations.

We understand that our mission to improve health outcomes and reduce inequities starts from within. Though much work remains, we are optimistic about the road ahead.

### Engaging Diverse Communities

In August 2023, PCMCH entered into a [strategic relationship agreement](#) with the Indigenous Primary Health Care Council (IPHCC), an organization that supports the advancement and evolution of Indigenous primary healthcare services in Ontario. Our partnership with IPHCC was developed in a mutual spirit of openness, respect and humility, and aims to foster high-quality perinatal, newborn and child healthcare for Indigenous peoples in Ontario. It recognizes that Indigenous health needs to be in Indigenous hands.

We also participated in the Black Health Plan Working Group, Ontario Health's Quality Standards Advisory Committee for Gender-Affirming Care, the Better Outcomes Registry & Network (BORN) Ontario's Health Equity Advisory Group, and discussions with various community organizations to advance health equity.

## Resources for Care Providers

In August 2023, we released [two video resources](#) that individual perinatal care providers, teams and organizations can use to reflect on and take steps towards enhancing the quality and cultural safety of the care they provide to 2SLGBTQIA+ individuals and families. These resources, which feature people with lived experience and interdisciplinary perinatal care providers, complement a previously developed tip sheet and will help healthcare providers learn approaches to supporting 2SLGBTQIA+ individuals.

We collaborated with Dr. Anne Berndt and Elizabeth Jung from Sunnybrook Health Sciences Centre's Accessible Care Pregnancy Clinic to develop resources to support healthcare professionals when caring for [pregnant individuals with physical disabilities](#). As part of our collaboration, we hosted a webinar, *Creating an Accessible Care Environment for Individuals with Physical Disabilities during Pregnancy and Birth*, which highlighted systemic healthcare barriers and identified care needs for pregnant individuals living with a physical disability. We also released an accessible care planning toolkit, which included a comprehensive pregnancy care checklist and a complex case conference template, for those providing care to pregnant individuals with disabilities.







## ENGAGING OUR PARTNERS TO IMPROVE HEALTH OUTCOMES

### Paediatric Diabetes Network

Coordinated by PCMCH, the Paediatric Diabetes Network (PDN) works to ensure the best possible health outcomes for children and youth with diabetes in Ontario. The network is comprised of 35 paediatric diabetes education programs (PDEPs) in tertiary- and secondary-level care settings across the province.

In March 2024, we reconvened the PDN Leadership Table, which will advise on key priorities and activities of the PDN. The reconvening of the PDN Leadership Table comes at a crucial time, as rates of paediatric diabetes are on the rise in Ontario, particularly among [Indigenous children and youth](#) and other equity-deserving groups. The PDN Leadership Table is comprised of staff from PDEPs, health system partners, and importantly, youth and parent advisors. In line with the Public Health Agency of Canada's Framework for Diabetes in Canada and Ontario Health's diabetes initiatives, the PDN

Leadership Table will focus on activities that address health inequities through collaboration and information exchange.

PCMCH continued its collaboration with BORN Ontario to create a provincial Paediatric Diabetes Registry. This registry will provide decision makers with high-quality, comprehensive data, which is crucial to better understand, monitor and address discrepancies in paediatric diabetes care and health outcomes in Ontario. We expect implementation of the Registry to roll out in 2026.

We also continued to organize and host learning and professional development activities related to paediatric diabetes. In March 2024, for example, we hosted the first PDN Complex Case Rounds, which was attended by over 100 staff from PDEPs. On November 13 – World Diabetes Day – we hosted a webinar on providing equitable access to paediatric diabetes care.



## Complex Care for Kids Ontario: From Demonstration Project to Provincial Program

The [Complex Care for Kids Ontario \(CCKO\)](#) program continued its growth in 2023-24, reflecting the program's trajectory since its launch in 2015.

In 2013, PCMCH released an action plan, [Pursuing the Possible](#), that highlighted key areas for transforming the experiences of children and youth who are medically fragile and/or technology dependent. In 2015, the Ministry of Health funded PCMCH to run a five-year CCKO demonstration project to advance the integration and coordination of care for children and youth with complex healthcare needs.

The success of CCKO during the demonstration period led to PCMCH receiving base funding starting in 2020 for CCKO to become a permanent program. Due to the significant increase in the demand for CCKO – with patient volumes up 61% from 2017 to 2024 – PCMCH worked collaboratively with CCKO program

sites and the Ministry of Health to rightsize the budget to account for program maturity and resourcing of comprehensive interprofessional teams across the regional sites, allow for program expansion where possible, and in turn, reduce growing waitlists. This past year, we also enhanced access to CCKO by initiating expansion to two new sites in Northern Ontario: Health Sciences North (HSN) and Thunder Bay Regional Health Sciences Center (TBRHSC).

CCKO's expansion in Northern Ontario acknowledges the region's unique and significant health human resource and geographic challenges. This expansion involves having a dedicated nurse practitioner at each Northern site, which will improve access and capacity in Northern Ontario to support children and youth with medical complexities through enhanced coordination with tertiary sites, children's treatment centres, Home and Community Care Support Services, and other local partners. Moreover, it will help prevent avoidable travel for patients and their families.

---

**"This initiative will go a long way to bridge a lot of the health inequity gaps that children with complex needs face here in the North."**

– Dr. Sean Murray, Chief of Pediatrics and Medical Director for the Northeastern Ontario (NEO) Kids and Family Program in Sudbury

---

## Perinatal Mental Health

Mental health is essential for the well-being of pregnant and postpartum women and individuals.

Over the past year, we continued evaluating the use and functionality of the PCMCH [Care Pathway for the Management of Perinatal Mental Health](#).

Released in 2021, the Care Pathway supports healthcare providers in providing mental health support for pregnant and postpartum patients by offering a recommended approach for identification, assessment, treatment and monitoring.

Since its publication, PCMCH's Care Pathway has been adopted and adapted locally and outside Ontario. For example, [Durham Region](#) has created an interactive web-based resource based on the PCMCH Care Pathway and the resources embedded are tailored to the Durham context and community.

[Ask Masi](#) is another example of an innovative program that is successfully utilizing the PCMCH Care Pathway. Launched by the Ottawa Hospital, Champlain Maternal Newborn Regional Program and Ottawa Birth and Wellness Centre, Ask Masi supports healthcare providers in addressing their patients' mental health needs by enabling healthcare providers to consult with perinatal mental health specialists in a quick and easy way. PCMCH plays an active role on Ask Masi's Advisory Council, bringing a provincial system lens to the conversation and contributing ideas related to sustainability and potential expansion.

## CCKO-HCCSS Guidelines

In March 2024, PCMCH and Home and Community Care Support Services (HCCSS) released [practice guidelines](#) to strengthen, align and standardize the relationships and protocols between HCCSS care coordinators and CCKO nurse practitioners.

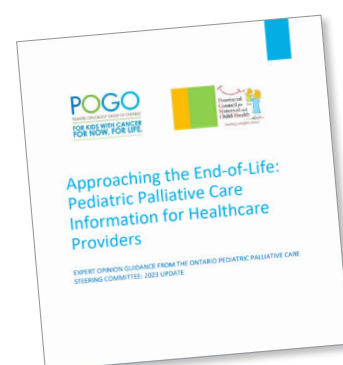
A part of our efforts to improve service delivery for children requiring complex care, the new guidelines are intended to optimize equitable care; enhance patient outcomes and experience; manage expectations and streamline communication; promote complementary and collaborative work; create efficiency in supporting protocols and information exchange; improve provider experience; and demonstrate wise stewardship of limited human resources across multiple sectors.

## Palliative Care Resources

PCMCH works with the Pediatric Oncology Group of Ontario (POGO) on several initiatives to advance the delivery of patient- and family-centred paediatric palliative care in Ontario. The impending death of a child is a tragedy that requires thoughtful and precise care and – in collaboration with POGO – we are committed to ensuring care providers have the appropriate supports they need.

As part of our collaboration, PCMCH and POGO formed the Provincial Paediatric Palliative Care Steering Committee (PPPC-SC) in 2010, which is comprised of paediatric palliative care clinicians, health administrators, family advisors, professional associations and community organizations. In December 2023, the PPPC-SC released two updated guidance documents for those providing care to children and their families at or near-end of life:

- [Approaching the End-of-Life: Pediatric Palliative Care Information for Healthcare Providers](#)
- [Symptom Management for Children Near/At End-of-Life](#)





## DRIVING SYSTEM IMPROVEMENT

### **Regional Networks Operational Forum: Driving Province-Wide Improvements through Coordination**

Through collaboration with maternal, newborn and child health regional networks across Ontario, PCMCH identifies and implements care improvements which lead to better health outcomes for Ontarians. In 2021, PCMCH established the Regional Networks Operational Forum (RNOF), a community of practice comprised of the six regional networks, PCMCH, BORN Ontario, the Ontario Health Regions and the Ministry of Health.

During the past year, RNOF members discussed provincial priorities and regional gaps, and shared updates on work being done to address them. The networks are currently engaged in a wide range of activities – from providing educational sessions for healthcare professionals to region-specific monitoring of key issues and collection of data. A major milestone this year was the establishment of [core elements of a network](#), which describe the features and functions that can be expected of every network and define future opportunities to further support perinatal, newborn and paediatric care regionally.

## Improving Emergency Department Care for Children and Youth Across Ontario

Children requiring emergency care have unique needs that are very different from those of adult patients, especially in serious or life-threatening situations.

To support hospitals providing care to children in emergency departments, PCMCH launched the Emergency Department Paediatric Readiness (EDPR) initiative in collaboration with Translating Emergency Knowledge for Kids (TREKK). Adapted from the National Pediatric Readiness Program in the United States, this initiative utilizes a comprehensive survey to provide hospitals with a benchmark and gap analysis report to identify where the hospital should improve. Sixty-six emergency departments across Ontario completed the survey and received customized reports.

In 2023-24, PCMCH analyzed EDPR data submitted by participating hospitals and identified, with input from the EDPR Advisory Group, opportunities for improvement. A report of the findings from the survey will be released in 2024.

## Ontario Perinatal Record

The Ontario Perinatal Record (OPR) is a form used by perinatal care providers across the province to document prenatal and early postpartum care in a standardized way.

In 2023-24, PCMCH struck an OPR Task Force, an interdisciplinary provincial committee with representatives from all perinatal care disciplines and relevant partner organizations. The OPR Task Force has been meeting monthly to review and update the content of the OPR and its accompanying User Guide to align with the current evidence and best practice for perinatal care and the documentation of that care. Over

250 users have provided feedback and input into the revisions to date. The updated OPR and accompanying User Guide will be released in the coming fiscal year.

## Specialized Transport for Newborns and Children in Northern Ontario

The transport of critically ill newborns and children is an essential component of Ontario's healthcare system. This is especially true in more remote regions, including in Northern Ontario, where service delays can have dire consequences.

In 2023-24, PCMCH continued to support the development of the Thunder Bay Regional Health Sciences Centre (TBRHSC) Transport Team as a part of our efforts to address system gaps and priority issues related to transport in Northern Ontario. The specialized transport team at TBRHSC ensures that urgent and emergent high-risk newborn and infant patients receive care closer to home and – more importantly – receive a rapid response for transport to a higher level of care in an emergency. Currently, critically ill newborn and paediatric patients in Northern Ontario must wait for a specialized team to travel from Southern Ontario or Winnipeg to pick them up for transport, with response times ranging between six to eight hours due to the distance that needs to be covered – much higher than the desired response time of up to four hours.

TBRHSC will implement their specialized transport team using a phased approach, with the team set to launch this year. The initial phase will provide 24/7 coverage to stabilize and transport newborns and infants up to 12 months of age, with a future goal to transport a larger paediatric population. Development and training of the team, as well as equipment sourcing, will continue into 2024.



# GOVERNING COUNCIL, COMMITTEES AND SECRETARIAT

## Governing Council

Bruce Squires (*Chair*)  
Jennifer Churchill  
Eyal Cohen  
Ronald Cohn  
Marilyn Crabtree  
Sanobar Diaz  
Crystal Edwards  
Remi Ejiwunmi  
Anna Greenberg  
Astrid Guttman  
Julia Hanigsberg  
Jackie Hubbert  
Bernard Lawless  
Judy Linton  
Cynthia Maxwell  
Alex Munter  
Sean Murray  
Stephanie Redpath  
Paul Roumeliotis  
Prakesh Shah  
Alicia St. Hill  
Nash Syed  
Ru Taggar  
Kristin Taylor  
Ziyaad Vahed

## Child & Youth Committee

Eyal Cohen (*Co-Chair*)  
Crystal Edwards (*Co-Chair*)  
Irene Andress  
Josee Blackburn  
Teresa Bruni  
Michael Casas  
Sue Chanko  
Darcia Curtis  
Bonnie Fleming-Carroll  
Michelle Gordon  
Anna Gunz  
Kerri Hannon  
Mona Jabbour  
Kimberley McClean

Angelo Mikrogianakis  
Caryn Nero  
Julia Orkin  
Jennifer Proulx  
Natalie Sherrit  
Brenda Weitzner  
Ian S. Zenlea

## Maternal-Newborn Committee

Marilyn Crabtree (*Co-Chair*)  
Ru Taggar (*Co-Chair*)  
Tihana Antic  
Ellen Blais  
Elizabeth Brandeis  
Lynne-Marie Culliton  
Marnie Lightfoot  
Crystal Edwards  
Susan Ellis  
Kelly Falzon  
Kerri Hannon  
JoAnn Harrold  
Wendy Katherine  
Marnie Lightfoot  
Kate Miller  
Christine Moon

Caryn Nero

Darlene Rose  
Alicia St. Hill  
Kristin Taylor  
Nisha Walibhai  
Mark Walker

## Transport Committee

Jackie Hubbert (*Co-Chair*)  
Stephanie Redpath (*Co-Chair*)  
Tihana Antic  
Teresa Bruni  
Ken Chen  
Cynthia Cupido

Jessica Davis  
Sonny Dhanani  
Gazelle D'Souza  
Julie Gordon  
Anna Gunz  
Salima Jaffer  
Shannon Jeffries  
Linda Lalani  
Kyong-Soon Lee  
Alexandra Murphy  
Caryn Nero  
Melissa Roney  
Tina Sakr  
Bruce Sawadsky  
Nisha Walibhai  
Wendy Whittle  
Emma Whyte  
Hilary Whyte

## Aligning Home and Community Care Support Services Care Coordinator and Complex Care for Kids Ontario Nurse Practitioner Roles and Responsibilities – Working Group

Karyn Lumsden (*Co-Chair*)  
Lisa Osqui (*Co-Chair*)  
Sonya Altena  
Dorota Azzopardi  
Laszlo Cifra  
Katy Eager  
Brenda Glenns  
Kisha Hamilton  
Jennifer Kaytar  
Krista Keilty  
Frances Mahon  
Kathleen Roppel  
Joanna Soscia  
Dianetia Stewart

Sydney Truelove  
Sabrina Umpherson  
Marta Wagner  
Jennifer Washington

## Cleft Lip & Palate/ Craniofacial Dental Program – Centralized Budget Work Group

Beverly Guttman (*Chair*)  
Rahil Begg  
Michael Casas  
Donovan Cooper  
Bala Kumbakonam  
Christina Mellies  
Jeannie Panagiotopoulos  
Kimberly Taylor

## Cleft Lip & Palate – Dental Directors Sub-Committee

Michael Casas (*Chair*)  
Robert Carmichael  
Gabriella Garisto  
Stephanie Lauziere  
Becky Olacke  
Thomas Oper  
Peter Pannozzo  
Gordon Payne  
Anne Young

## Cleft Lip & Palate/ Craniofacial Dental Program – Operational Advisory Committee

Lesley Tarasoff (*Chair*)  
Rahil Begg  
Sonya Blanchet  
Tonia Bryans  
Robert Carmichael  
Stephanie Carter  
Michael Casas

Christine Clark  
 Donovan Cooper  
 Enza Dininio  
 Kerry Fahey  
 Gabriella Garisto  
 Karen Kinnear  
 Bala Kumbakonam  
 Stephanie Lauziere  
 Karen Margallo  
 Christina Mellies  
 Becky Olacke  
 Thomas Oper  
 Jeannie Panagiotopoulos  
 Peter Pannozzo  
 Gordon Payne  
 Sharon Samaan  
 Kimberly Taylor  
 Trish Wilson  
 Tanya Wishloff-Hunt  
 Anne Young

**Complex Care for Kids Ontario (CCKO) Leadership Table**

Sanober Diaz (*Chair*)  
 Irene Andress  
 Krista Binnington  
 Teresa Bruni  
 Jennifer Churchill  
 Eyal Cohen  
 Paula Crotteau  
 Michelle Gordon  
 Nancy Horan  
 Lara Keable-John  
 Chantal Krantz  
 Sophia Lawson  
 Audrey Lim  
 Karyn Lumsden  
 Nathalie Major  
 Siobhan McEwen  
 Sean Murray  
 Rahul Ojha  
 Julia Orkin

Tanja Patry  
 Diane Paradis  
 Shannon Reaume  
 Joanna Soscia  
 Rajwant Sousa  
 Leah Tattum

**Complex Care for Kids (CCKO) Transfer Working Group**

Katy Eager  
 Joanna Soscia  
 Leah Tattum  
 Sonya Altena  
 Frances Mahon

**Emergency Department Paediatric Readiness (EDPR) Advisory Group**

Mona Jabbour (*Co-Chair*)  
 Rebecca Liebau (*Co-Chair*)  
 Kashif Ahmed  
 Kylie Booth  
 Andrea Boysen  
 Amy Burton  
 Rikki Hendrickson  
 Hilary Hewes  
 Marion Knutson  
 Rodrick Lim  
 Jennifer McTaggart  
 Julia Orkin  
 Kristen Raiskums  
 Amit Shah  
 Michele Sloss

**Ontario Paediatric Bariatric Network (OPBN) Performance Measurement and Evaluation Working Group**

Katherine Morrison  
 (*Co-Chair*)  
 Ian Zenlea (*Co-Chair*)

Janice Austin  
 Matthew Belviso  
 Annick Buchholz  
 Alessandro (Alex) Gabriele  
 Jill Hamilton  
 Iain Jamieson  
 Gina Maloney  
 Haley Nyboer  
 Kelly Proulx  
 Andrea Regina  
 Jane Rutherford  
 Michela Savoia  
 Alene Toulany  
 Tara West  
 Jennifer Yu

**Ontario Perinatal Record (OPR) Task Force**

Tihana Antic  
 Robyn Berman  
 Anne Biringer  
 Deborah Bonser  
 Nicolette Caccia  
 Marilyn Crabtree  
 Christine Dallaire  
 Shelley Dougan  
 Catherine Gascon  
 Louise Gilbert  
 Marie Greer-King  
 Mayura Kandasamy  
 Jewell Kirkopoulos  
 Jennifer Mercer  
 Paige Ricketts  
 Jordan Schmidt  
 Sridevi Veluganti  
 Katherine Wallace  
 Daniel Warshafsky  
 Kerri Wilson Smith

**Ontario Paediatric Bariatric Network (OPBN) Advisory Committee**

Jane Rutherford (*Co-Chair*)  
 Ian Zenlea (*Co-Chair*)  
 Chelsea Adair  
 Theresa Barber-Pin  
 Sarah Barker  
 Teresa Bruni  
 Annick Buchholz  
 Becky Burton  
 Phoebe-ann Foley  
 Stasia Hadjiyannakis  
 Adina Hauser  
 Jaimie Kennedy  
 Allie Loughheed  
 Gina Maloney  
 Gordon McSheffrey  
 Katherine Morrison  
 Sheri Nsamenang  
 Haley Nyboer  
 Rajwant Sousa  
 Kayleigh Rampersad  
 Andrea Regina  
 Jennifer Restivo  
 Tara West  
 Marina Ybarra  
 Sarah Zameret

**Ontario Paediatric Bariatric Network (OPBN) Model of Care Refresh Working Group**

Sarah Barker  
 Elizabeth Dettmer  
 Jill Hamilton  
 Katherine Morrison  
 Haley Nyboer  
 Jane Rutherford

**Paediatric Diabetes****Network (PDN)****Leadership Table**

Alexandra Ahmet  
(*Co-Chair*)

Alanna Landry (*Co-Chair*)

Grace Bannerman

Shaun Barrett

Carlie Anne Bigras

Ryan Emond

Jacque Filteau

Nicole Forget

Jess Forster

Marley Greenberg

Nancy Horan

Tiffany Krah

Hannah Ohman

Chelsey Poelman

Denise Powe

Sara Remillard

Alina Siddiqui

Josée St-Denis

Ian Zenlea

**PCMCH-BORN Ontario****Paediatric Diabetes****Registry (PDR) Executive****Steering Committee**

Sanober Diaz (*Co-Chair*)

Alicia St. Hill (*Co-Chair*)

Jennifer Anderson

Tihana Antic

Lola Brown

Joe-Anne Chaput

Tudor Chirila

Mireille Cloutier

Nicolas Ducharme

Ellen Goldbloom

Shelly-Ann Hall

Sarah Hamilton

Andrea Kohut

Alanna Landry

Jenny Merla

Ethan Parikh

Rayzel Shulman

Elizabeth Stevens

Josée St-Denis

Ian Zenlea

**PCMCH-POGO****Provincial Paediatric****Palliative Care Steering****Committee (PPPC-SC)**

Mark Greenberg (*Co-Chair*)

Adam Rapoport (*Co-Chair*)

Carla Bennett

Susan Blacker

Deanna Bryant

Sanober Diaz

Julie Drury

Kelly Finlayson

Valerie McDonald

Jill Ross

Bruce Squires

Kim Widger

Megan Wright

**Provincial Transport****Model (PTM) Task Force**

Teresa Bruni

Cynthia Cupido

Crystal Edwards

Kimberley Felker

Kelly Finlayson

Julie Gordon

Isabel Hayward

Jackie Hubbert

Adam Lamoureux

Stephanie Redpath

Henry Roukema

Bruce Sawadsky

Hilary Whyte

**Regional Networks****Operational Forum****(RNOF)**

Natalie Kennedy

(*Co-Chair*)

Kerri Hannon (*Co-Chair*)

Jessie Alsop

Tihana Antic

Jon Barrett

Josée Blackburn

Wendy Carew

Rose Cook

Emma Esselink

Mackenzie Heath

Linda Hunter

Martha Hunter

Crystal Lawrence

Marnie Lightfoot

Caryn Nero

Julia Orkin

Darlene Rose

Tina Sakr

Alicia St. Hill

**Transport Operations****Group**

Cynthia Cupido (*Co-Chair*)

Kristie Newton (*Co-Chair*)

Jill Allan

Ian Attard

Adam Bennett

Melissa Brett

Jeremy Chance

Ken Chen

Dan Countryman

Russell Crocker

Catherine Delaney

Jessica Davis

Kelly Finlayson

Julie Gordon

Nicole Greaves

Salima Jaffer

Chris Kroker

Mike Merko

Todd Mortimer

Kevin Montgomery

Alexandra Murphy

Justin Pyke

Melissa Roney

Stephanie Seir

Brent Winchcombe

Madeline White

Emma Whyte

**PCMCH Secretariat**

Sanober Diaz

Sinaa Dabbagh

Bhakti Dattani

John Gilson

Brittany Groom

Allison Hall

Dominique-Michelle

Legacy

Lilian Lin

Alison McPhedran

Lisa Osqui

Gabrielle Retta

Alexandra Thorp

Lesley Tarasoff

Laura Zahreddine



555 UNIVERSITY AVENUE | TORONTO, ONTARIO | M5G 1X8 CANADA

[WWW.PCMCH.ON.CA](http://WWW.PCMCH.ON.CA)