

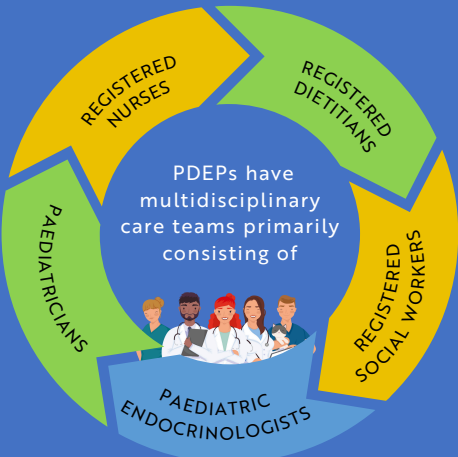
PAEDIATRIC DIABETES CARE IN ONTARIO

Coordinated by PCMCH since 2013, the [Paediatric Diabetes Network](#) (PDN) is comprised of 35 specialized paediatric diabetes education programs (PDEPs) located primarily in hospitals and community health centres across Ontario.

REACH

PDEPs SERVED
8,000+
CHILDREN & YOUTH
LIVING WITH DIABETES
IN 2023/24

TEAM-BASED CARE



PATIENT POPULATION TRENDS

2x

AS MANY CHILDREN LIVING
WITH TYPE 2 DIABETES
SERVED BY PDEPs IN 2023/24
COMPARED TO 2012/13

NEW PATIENTS IN 2023/24 (34 PDEPs)

79%



17%



4%



CHILDREN DIAGNOSED WITH TYPE 2
DIABETES



CHILDREN/FAMILIES WHO
SPEAK A LANGUAGE OTHER
THAN ENGLISH OR FRENCH



RACIALIZED CHILDREN



DIAGNOSES AMONG
CHILDREN AGE 6 AND
UNDER



Four most common patient population trends reported by 34 PDEPs. PDEPs could select more than one option/all that apply. Other trends included increases in pre-diabetes referrals, transition-aged youth, insulin pump use, and newcomer and refugee children.

CO-LOCATION

PDEPs CO-LOCATED WITH ADULT DEPs

SAME CLINIC SPACE

19

DIFFERENT
CLINIC SPACE

8

NOT CO-
LOCATED*

8



*These largely include PDEPs located in children's hospitals.

SERVICE PROVISION

At PDEPs, children and youth are provided with comprehensive education and care to help them manage their medical, nutritional, and psychosocial needs related to diabetes.



- Insulin adjustment and carbohydrate counting
- Blood glucose monitoring and glycemic targets
- Management of hypoglycemia and hyperglycemia
- Mental and psychosocial health
- Nutrition and healthy eating
- Exercise and sports
- Use of self-management technologies/devices (e.g., insulin pumps, continuous glucose monitors)
- Sick day management
- School and diabetes care
- Transition to adult diabetes care preparation
- And more!